



**WARNING! DEATH or SERIOUS INJURY can occur if manufacturer's instructions are not followed correctly.**

## E-Z-ON® Kid Y Harness *Installation Guide for Family Vehicles*

- Meets FMVSS213
- The Kid Y Harness must be used with the FB322 Full Back Booster for passengers 30-80lbs. or with the NB321 No Back Booster for passengers 40-80lbs.
- You must use your E-Z-ON® tether kit (included) to install this restraint if the factory installed tether anchor weight limit is under 80 lbs.) or not available in your vehicle
- Replace after a crash or 5 years from the date of manufacture
- Be sure to register this restraint to be notified of a safety recall



**E-Z-ON®**  
Products, Inc. of Florida

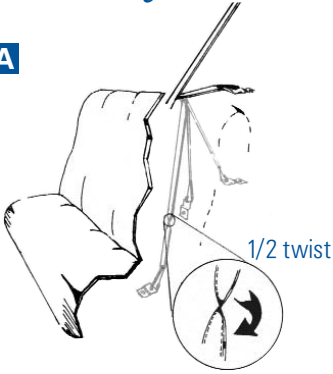
605 Commerce Way West • Jupiter, FL 33458

800-323-6598 • Fax 561-747-8779 • [www.ezonpro.com](http://www.ezonpro.com)

© 2004 E-Z-ON®

# E-Z-ON<sup>®</sup> Kid Y Harness *Installation Guide for Family Vehicles*

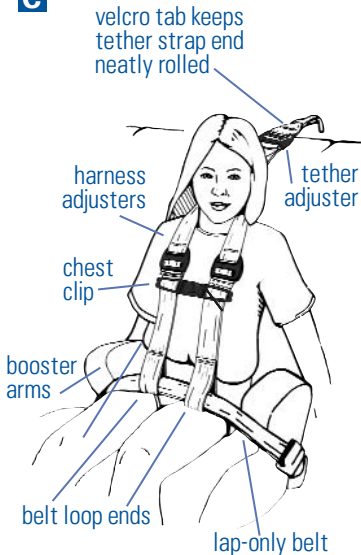
**A**



**B**



**C**



**The Kid-Y Harness needs:** a vehicle lap belt (a locking clip for a lap/shoulder belt,) a Ride Ryte booster and a proper tether anchor for a complete installation.

## Find tether anchor bracket:

**A. Check** your vehicle owner's manual to **locate** the factory installed tether bracket in your vehicle. Vehicles have different anchor locations and weight limits.

- **See** [www.saferidenews.com](http://www.saferidenews.com) for more tether information.
- (Kid Y tether strap **can be turned** one half-twist to correctly snap on difficult anchor locations.)

**B. Use only** a Ride Ryte™ Booster with the Kid Y Harness. They have been crash tested together to meet FMVSS 213. This system is not FAA approved. **Follow** the booster guide for proper installation.

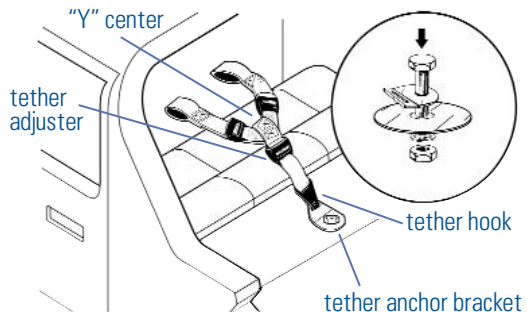
## Lap belt-only with factory installed anchor

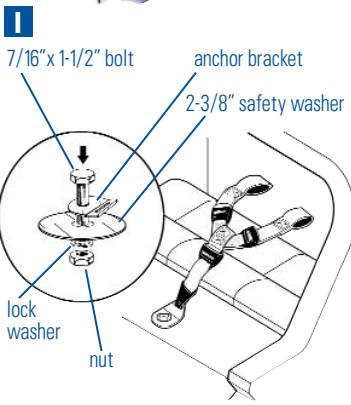
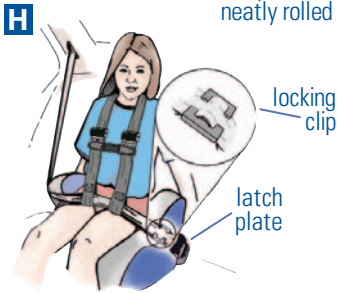
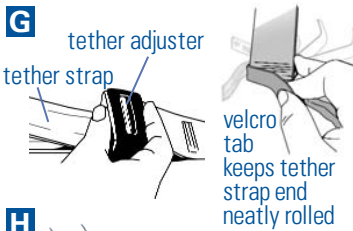
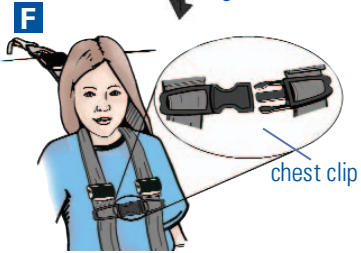
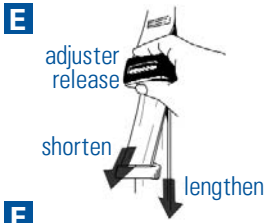
**C. Place** adjustable harness straps over each shoulder on the child, seated on the booster. **Allow** belt loop ends to lay on child's lap. **Thread** vehicle lap-only belt across the lap, through each belt loop. **Buckle** the lap belt low, keeping it under the booster arms.

**D. Attach** the tether hook to the anchor bracket directly behind the child, if possible. If not, 20 degrees away from the "Y" center is acceptable.

If your vehicle does not have a factory installed tether anchor, go to step I.

## **D** E-Z-ON Kid Y tether kit *assemble as shown*





**E. Press** adjuster release. **Pull** webbing from each harness adjuster to lengthen or shorten the harness for proper fit. **Reduce** slack. **Do NOT** pull tight. **Be sure** lap belt is low under booster arms.

**F. Snap** together the chest clip ends. **Keep** always at center chest, under harness adjusters.

**G. Reduce** slack in tether strap. **Press** adjuster release. **Pull** tether strap snug. **Roll** extra web and **secure** velcro tab

**H. Use** a locking clip with a lap/shoulder belt (can be ordered from E-Z-ON®). **Buckle** the lap/shoulder belt and **reduce** slack. **Pinch together** the 2 belt parts near the latch plate and unbuckle the belt. **Thread** pinched web onto the the locking clip near the latch plate. **Thread** the "locked" lap belt portion like a lap belt. **Follow** steps in C.

### Install the Kid Y Anchor Kit

**I. Find** the correct location to install Kid Y tether anchor kit. Vehicles older than 1999 may have pre-drilled anchor holes 5/16" (8 mm) and/or threaded weld nuts. These are smaller than the Kid Y bolt. **Make** smaller holes larger, **or drill** 1-1/4" away from the original hole with a 7/16 bit. **Check** with a certified mechanic. **Read** your vehicle manual before drilling.



**WARNING! Locate fuel and exhaust lines before drilling.**

**Tools needed:** Drill with 7/16th bit, screw driver, wrench, silicone sealant, eye protection, tape measure, Kid Y tether kit included (prepare as shown). Drill behind harness, (or within 20 degrees of the "Y" center) on solid flat sheet metal. The anchor **should not be installed**

45 degree angle



more than 45 degrees from harness shoulder level. **Do not drill** under or below the seat back or less than 8 inches away from top of harness. **Make sure** bracket slot faces the front of the vehicle **before tightening**. **Silicone** the hole if it is open to the outside. **Follow steps D-F** to complete installation.

# Kid-Y on a School Bus Seat Use

**30-80 lbs.**

Must Use with a Ride RYTE Booster™



- 1. Install** the Kid-Y tether bracket using the school bus seat belt hardware.
- 2. Look** under the reinforced bus seat to find the seat belt hardware.
- 3. Unscrew** the nut, **slide** the Kid Y tether bracket on the bolt. **Be sure** the tether slot faces the front of the vehicle on the existing bolt. **Replace** the nut securely.
- 4.** Be sure to **install** using the belt hardware closest to the center of the passenger using the Kid Y harness. (see D)
- 5. Follow C-E** for final steps of installation

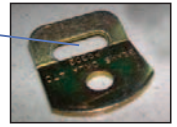


Kid Y tether strap

Kid Y tether bracket

existing seat belt hardware

tether slot



Use the Kid Y tether swivel bracket along with the bus seat belt hardware.

## How to Register This Child Restraint

Child restraints could be recalled for safety reasons.

You **must register** this restraint in order to be notified of recall.

**Fill out** the REGISTRATION CARD enclosed with your E-Z-ON® Kid Y Harness, **send** your name address and the restraint model number and manufacturing date to the address below or **log on** to our website [www.ezonpro.com](http://www.ezonpro.com) and **fill out** your product information via our registration page.

For recall information, call the U.S. Government Auto Safety Hotline at 1(800) 424-9393. In the Washington D.C. area call (202) 366-0123.



**E-Z-ON®**

Products, Inc. of Florida

605 Commerce Way West • Jupiter, FL 33458

800-323-6598 • Fax 561-747-8779 • [www.ezonpro.com](http://www.ezonpro.com)

© 2004 E-Z-ON®